



[Home](#) | [About](#)

[Membership](#)

[Registration](#)

[Online](#)

[Competition](#)

[Education](#)

[Marketing](#)

[ABGA Online Signon](#)

[Join Now](#)

[Forms and Fees](#)

[Show Results](#)

[Events](#)

[The Boer Goat Magazine](#)

[Affiliates](#)

[News](#)

[Disciplinary Action](#)

[Marketplace](#)

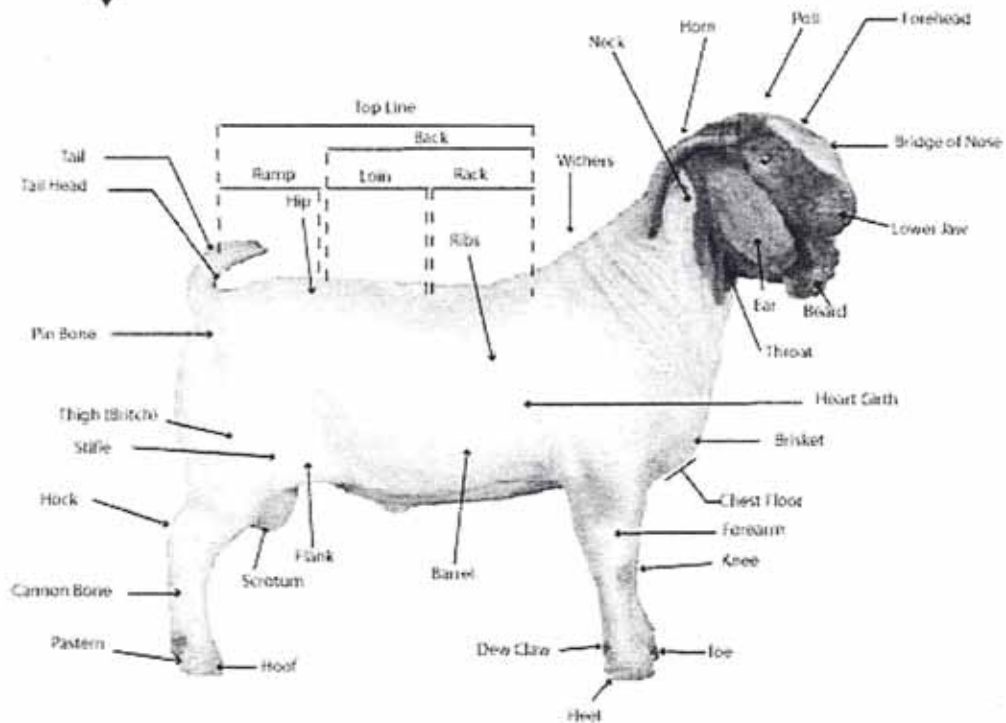
[Payment Center](#)

**American Boer Goat Association**  
Ph: 325.486.2242  
Fax: 325.486.2637  
Info@abga.org

© Copyright 2007.  
All rights reserved.  
Data Access and Use



## American Boer Goat Association Boer Goat Anatomy



Design by EDJE Technologies



## American Boer Goat Association Teat Structure Outline Side View of Animal

### Acceptable



**1**  
1 functional teat  
1 milk channel



**2**  
1 functional teat  
1 milk channel  
1 non-functional teat



**3**  
2 functional teat  
2 milk channels



**4**  
Split teat



**5**  
2 functional teat  
2 milk channels  
1 non-functional teat

### Questionable



**6**  
1 functional teat  
2 milk channels



**7**  
1 functional teat  
2 milk channels  
1 non-functional teat



**8**  
Split teat



**9**  
Cluster teats



**10**  
1 functional teat &  
with cluster



**11**  
Split teat

#### ABGA Breed Standards

Does should have well formed udders with good attachment with the number of functional teats not to exceed two per side. A split teat with two distinctly separated teats and openings with at least 50% of the body of teat separated is permissible but teats without a split are preferred.

It is most important that the udder is constructed so that the offspring are able to nurse unassisted.

**Faults:** Udder and teat abnormalities or defects to include but not limited to oversized or bulbous teats, pendulous udder.

**Disqualifications:** Cluster teats, fishtail teats or a doe that has not kidded or exhibited signs of pregnancy by 24 months of age

### Disqualification



**12**  
Split teat



**13**  
Fishtail teat



**14**  
Fishtail teat



**15**  
Cluster teats



**16**  
Cluster teats

American Boer Goat Association  
1207 South Bryant Suite C  
San Angelo, Texas 76903  
(325) 486 -2242  
[www.abga.org](http://www.abga.org)

Design by EDJE Technologies


[Home](#) | [About](#)
[Membership](#)
[Registration](#)
[Online](#)
[Competition](#)
[Education](#)
[Marketing](#)
[ABGA Online Signon](#)

## ABGA - Breed Standards

[Join Now](#)

Date 04-11-2007

[Forms and Fees](#)
[Show Results](#)
[Events](#)

### I. CONFORMATION

Any extreme occurrence of an undesirable trait is a disqualification.

[The Boer Goat Magazine](#)
[Affiliates](#)
[News](#)
[Disciplinary Action](#)
[Marketplace](#)
[Payment Center](#)

### HEAD

A prominent, strong head with brown eyes and a gentle appearance. Nose with a gentle curve, wide nostrils, and well formed mouth with well-opposed jaws. The jaws must have no over or under bite from birth to 24 months of age. After 24 months no more than a ¼ of an inch under bite is allowed. Correct fit is preferred. Teeth should erupt in the proper sequential positions. The forehead should be prominent and form an even curve linking the nose and horns. Horns should be dark, round, strong, of moderate length, positioned well apart and have a gradual backward curve before turning outward symmetrically. Ears should be smooth of medium length and hang downward.

Faults: Concave forehead, straight horns, jaw too pointed, overshot or undershot jaws  
 Disqualifications: Blue eyes, ears folded lengthwise, short ears, parrot mouth or more than ¼ of an inch under bite.

**American Boer Goat Association**  
 Ph: 325.486.2242  
 Fax: 325.486.2637  
[info@abga.org](mailto:info@abga.org)

© Copyright 2007. All rights reserved.

Data Access and Use

### NECK AND FOREQUARTERS

Neck of moderate length and in proportion with body length. Forequarters full, well-fleshed, and limbs well jointed and smoothly blended. The chest should be broad. Shoulders should be fleshy, well proportioned with the rest of the body and smoothly blended and fitted into the withers. Withers should be broad and well rounded and not sharp. Legs should be strong, well placed and in proportion with the depth of the body. Pastern joints should be strong and hooves well-formed and as dark as possible.

Faults: Neck too short or too thin; shoulders too loose, and any structural foreleg, and muscle, bone, joint, or hoof deformities or abnormalities to include but not limited to knock knees, bandy legs, hooves pointing outward or inward, splay toes, buck knees, hollow legs, straight or weak pasterns.

### BODY

Body should be boldly three-dimensional: long, deep and wide. Ribs should be well sprung. Loin should be well muscled, wide and long. The top line should be reasonably straight and strong and the shoulder well rounded with an abundance of muscle from shoulder through hip.

Faults: Concave or swayback; chest too narrow or shallow or flat; shoulders weakly attached; inadequate muscle through the back and loin, pinched heart girth.

### HINDQUARTERS

Rump should be broad and long with a gentle slope. Rutch and thighs well muscled and rounded. Base of the tail must be centered and straight. The remainder of the tail can curve upward or to one side. Legs should be strong and the leg should have a straight axis from the hip (pin bones) through the hock, fetlock, and pastern. Hoofs should be well-formed and as dark as possible. Faults: Weak pasterns, straight pasterns, rump too steep, sickle-hocked, cow-hocked, post legs.

Disqualifications: Wry tail

## II. SKIN AND COVERING

Any extreme occurrence of an undesirable trait is a disqualification. Skin loose and supple. Eyelids and other hairless areas must be pigmented. Hairless areas under the tail should be at least 75% pigmented; 100% is preferred. Short glossy hair is desirable. A limited amount of winter down or under-coat will be accepted during winter, especially in colder environments.

Faults: Hair too long or too coarse.

Disqualifications: Not enough skin pigmentation.

## III. REPRODUCTIVE ORGANS

Any extreme occurrence of an undesirable trait is a disqualification.

### DOES

Does should have well formed udders with good attachment with the number of functional teats not to exceed two per side. A split teat with two distinctly separated teats and openings with at least 50% of the body of teat separated is permissible but teats without a split are preferred. It is most important that the udder is constructed so that the offspring are able to nurse unassisted.

A. Kidding or Pregnancy Does must have kidded or exhibited pregnancy by 24 months of age.

Faults : Udder and teat abnormalities or defects to include but not limited to oversized or bulbous teats, pendulous udder.

Disqualifications: Cluster teats, fishtail teats or a doe that has not kidded or exhibited signs of pregnancy by 24 months of age.

### BUCKS

Bucks must have two large well-formed, functional, equal sized testes in a single scrotum with no more than a 2" split in the apex of the scrotum.

Disqualifications: Single Testicle. Testicles too small. Abnormal or diseased testes; excessive split in scrotum.

## IV. COLORATION

The preferred Boer goat is an animal with red hair on the head and ears and white on the remainder of the body but other coloration's are acceptable


[Home](#) | [About](#)
[Membership](#)
[Registration](#)
[Online](#)
[Competition](#)
[Education](#)
[Marketing](#)
[ABGA Online Signon](#)

## Percentage Breed Standards

[Join Now](#)

Date 04-23-2007

[Forms and Fees](#)
[Show Results](#)
[Events](#)
[The Boer Goat Magazine](#)
[Affiliates](#)
[News](#)
[Disciplinary Action](#)
[Marketplace](#)
[Payment Center](#)

The American percentage Boer doe is a unique product that combines the more desirable characteristics of the indigenous goats of North America and other breeds with the genetic impact of the improved Boer goat. Producers should at all times strive to select and breed animals that exhibit a predominance of Boer goat conformation and production traits. In short, a percentage Boer doe should look and perform as much like a fullblood improved Boer doe as possible. The percentage Boer doe should be feminine, yet strong and vigorous and symmetrical, with well-balanced muscling. She should be able to breed easily and have the conformation and constitution to easily raise fast growing animals. With certain exceptions, the standards for percentage Boer does will be identical to those required of fullblood or purebred animals.

### I. CONFORMATION

Any extreme occurrence of an undesirable trait is a disqualification.

#### A. HEAD

A prominent strong head with brown eyes. The jaws must have no over or under bite from birth to 24 months of age. After 24 months no more than a ¼ of an inch under bite is allowed. Correct fit is preferred. Teeth should erupt in the proper sequential positions. The forehead should be prominent and form an even curve linking the nose and horns. Horns should be strong, of moderate length, positioned well apart and have a gradual backward curve before turning outward symmetrically. Ears should be smooth of medium length and hang downward.

Faults: Horns too close, jaws too pointed, short ears.

Disqualifications: Blue eyes, ears folded lengthwise, short ears, parrot mouth or more than ¼ of an inch under bite.

#### B. NECK AND FOREQUARTERS

Neck of moderate length and in proportion with body length. Forequarters full well fleshed, and limbs well jointed and smoothly blended. The chest should be broad. Shoulders should be fleshy, well proportioned with the rest of the body and smoothly blended and fitted into the withers. Withers should be broad and well rounded and not sharp. Legs should be strong, well placed and in proportion with the depth of the body. Pastern joints should be strong and hooves well-formed and as dark as possible.

Faults: Neck too short or too thin; shoulders too loose, any structural foreleg, muscle, bone, joint or hoof deformities of abnormalities to include but not limited to knock knees, bandy legs, hooves pointing outward or inward, splay toes, buck knees, hollow leg, straight or weak pasterns.

#### C. BODY

Body should be boldly three dimensional, long, deep, and wide. Ribs must be well sprung. Loin should be well muscled, wide and long. The top line should be reasonably straight and strong and the shoulder rounded with an abundance of muscle from shoulder through hip.

Faults: Concave or swayback; chest too narrow or shallow or flat, shoulders weakly attached, inadequate muscle through the back and loin, pinched heartgirth.

**American Boer Goat Association**  
Ph: 325.486.2242  
Fax: 325.486.2637  
info@abga.org

© Copyright 2007. All rights reserved.

Data Access and Use

#### D. HINDQUARTERS

Rump broad and long with a gentle slope. Britch and thighs well-muscled and rounded. Base of tail must be centered, straight; remainder of tail can curve upward or to either side. Legs should be strong and the leg should have a straight axis from the hip (pin bones) through the hock, fetlock, and pastern. Hooves should be well formed and as dark as possible.

Faults: Weak pasterns, straight pasterns, rump to steep, sickle hocked, cow hocked, and post legs.

Disqualifications: Wry Tail

#### II. SKIN AND COVERING

Any extreme occurrence of an undesirable trait is a disqualification. Skin loose and supple. Eyelids and other hairless areas must be pigmented. Hairless areas under tail should be at least 50% pigmented; 100% is ideal. Short glossy hair is desirable. A limited amount of winter down or under coat will be acceptable during winter, especially in colder environments.

Faults: Hair too long or too coarse.

Disqualifications: Not enough skin pigmentation.

#### III. REPRODUCTIVE ORGANS

Any extreme occurrence of an undesirable trait is a disqualification. Does should have well formed udders with good attachment and no more than two functional teats per side. A split teat with two distinctly separated teats and openings with at least 50% of the body of the teat separated is permissible but teats without a split are preferred. It is most important that the udder is constructed so that offspring are able to nurse unassisted.

A. Kidding or Pregnancy Does must have kidded or exhibited pregnancy by 24 months of age. Faults: Udder and teat abnormalities or defects to include but not limited to oversize or bulbous teats, pendulous udder.

Disqualifications: Cluster teats, fishtail teats or a doe that has not kidded or exhibited signs of pregnancy by 24 months of age.